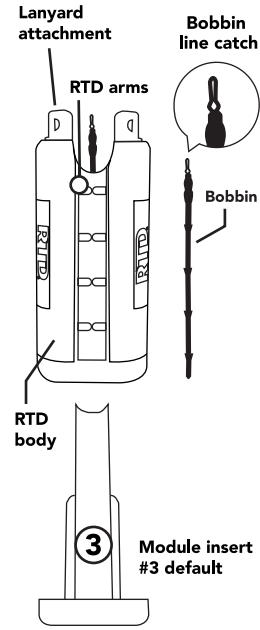


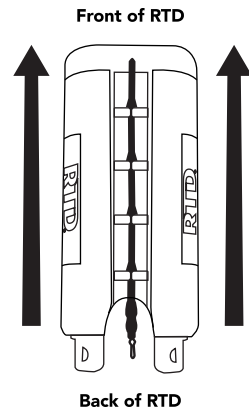


Manual

WHAT'S INSIDE



UNIT MOVES IN THIS DIRECTION ONLY



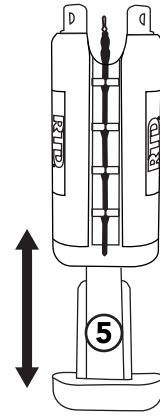
DIRECTIONS

How to use the RTD

1

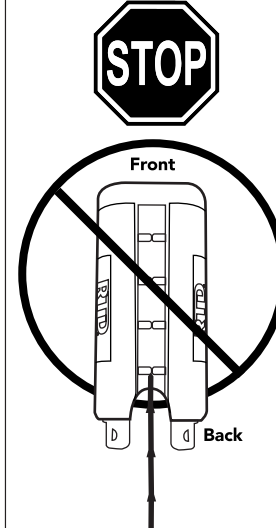
Use guide module already in the main body of the RTD. Size 3 is the default size already in the RTD.

If there is not enough clearance between the module and bobbin on larger/thicker guides, install size 5 module.



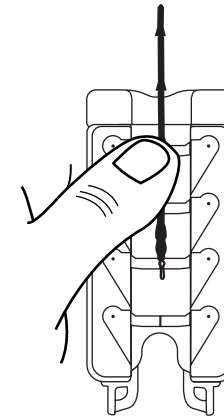
2

*DO NOT LOAD THE BOBBIN FROM THE BACK OF THE RTD TO THE FRONT. DAMAGE TO THE RTD WILL OCCUR IF LOADED THE WRONG WAY.



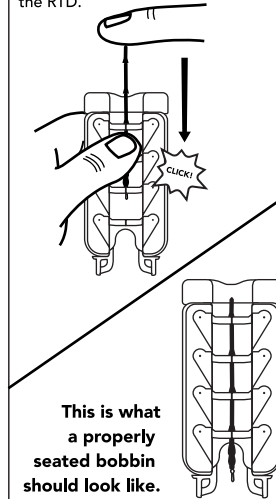
HOLD BOBBIN IN PLACE

Hold the bobbin against the centerline of the RTD where the arms on either side meet. Ensure the bobbin is forward of the gates as per the diagram.



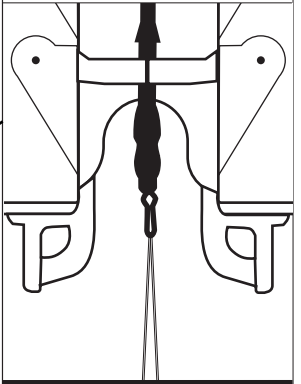
HOLD DOWN BOBBIN & PRESS BACK

CONTINUE TO FIRMLY HOLD THE BOBBIN. With the tip of your index finger of your other hand, push the tip of your bobbin aft of the unit slowly until the arms open. Your thumb will gently push the bobbin into the holes down the centerline of the RTD.



3

Grab both the free end and the main line together, forming a loop. Give a firm tug to pull the line snugly into the narrowing section of the line catch.



TURN OVER

4

With the bobbin tip facing the threading direction, aim bobbin through each guide and move the RTD along the rod keeping it parallel to the rod.

The guide module on the forward edge of the RTD will position the bobbin to enter the guides on the rod.

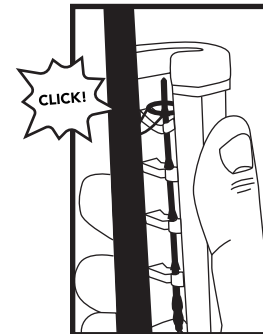
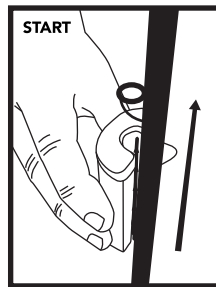
The rod guides will slide down the channel in the module of the RTD.

This channel keeps the rod guides positioned in the RTD until the rod guides exit the back of the RTD.

You will hear a distinct clicking sound as the guides pass through each set of arms in the RTD

NOTE: THE RTD CAN BE USED TO BRING LINE UP OR DOWN A ROD.

You are now ready to thread your rod!



5

Continue this all the way along the rod until all rod guides have been threaded.

* In the event that the bobbin slips out of the RTD, simply re-insert the bobbin as described in step 2. The bobbin can be inserted into the arms of the RTD with or without line attached.

DISCLAIMER

THE RTD DOES NOT WORK ON MICRO GUIDES

** This RTD WILL NOT WORK on Micro Guides or similar small size guides, See below for parameters.

This tool will only work on guides that are 27 mm or less outside diameter and 4.5 mm and larger inside diameter.

Erupt Fishing is not responsible for misuse of the RTD that may cause damage to any rod.

READ ALL DIRECTIONS PROVIDED BEFORE USE OF THE RTD.

VIDEO ON HOW TO USE AT WWW.ERUPTFISHING.COM

SPINNING ROD DIRECTION

Spinning rods may have an oversized gathering guide or two near the reel. The line must be finger threaded through these firstly before using the RTD.

Attach the line to the RTD and thread the rest of the guides towards the tip of the rod normally.

Your rod is now threaded using the RTD!
HAPPY FISHING!

ERUPT FISHING RTD LIMITED 1 YEAR WARRANTY

One (1) Year Limited Warranty

Thank you for purchasing the Rod Threading Device (RTD). Erupt Fishing will warrant to the original retail purchaser that the RTD will be free of defects in material and workmanship for a period of One (1) year from the date of purchase. During this period, if Erupt Fishing determines that this RTD is defective, Erupt Fishing will replace the RTD with the same or similar RTD at no charge, in order for an RTD to be considered for warranty replacement. Return the RTD to the retailer where originally purchased or return prepaid and insured at your expense to Erupt Fishing in a box at the address listed below. All warranty claims should be accompanied by a valid dated sales receipt and a description of the warranty issue. This limited warranty will be void if the RTD

has been modified, neglected, improperly maintained, misused or abused as determined by the retailer or Erupt Fishing.

To initiate a claim: Please, fill out the contact form on our website www.eruptfishing.com letting us know you need a warranty claim processed; include the RTD model number, full name, and contact information. Your returned RTD MUST be accompanied by a Completed Warranty Claim Form on www.eruptfishing.com and Authorization Number for it to be processed.

Erupt Fishing
1515 8th Ave
Fort Worth, TX 76104